

Key investor information

This document provides you with key investor information about this fund. It is not marketing material. The information is required by law to help you understand the nature and the risks of investing in this fund. You are advised to read it so you can make an informed decision about whether to invest.

M G T S

MGTS AFH DA European Equity Fund R Acc (GB00BYXG9P08)

The Sub-fund is managed by Margetts Fund Management Limited.

Objective and Investment Policy

Investment Objective

To provide capital growth over any 7 year period.

How will the objective be achieved?

The Sub-fund will invest at least 70% of the portfolio in shares of mainland European companies (being companies which are incorporated, domiciled or have the predominant part of their business in Europe, excluding the UK) by delegating authority for all or part of the portfolio to sub-delegated managers.

The Sub-fund may also invest in collective investment schemes (restricted to 10%) (which may include schemes operated by the manager, associates or controllers of the manager) and other transferable securities (such as UK, non-EEA securities, bonds, money market instruments and derivatives).

The Sub-fund will be fully invested save for an amount to enable ready settlement of liabilities (including redemption of shares) and efficient management of the Sub-fund both generally and in relation to its investment objective. This amount will vary depending upon prevailing circumstances and although it would normally not exceed 10% of the total value of the Sub-fund, there may be times when the Manager considers stock markets around the world to be overpriced or that a period of instability exists which presents unusual risks. In such cases or during such periods, a higher level of liquidity may be maintained and, if considered prudent, the amount of cash or near cash instruments held would be increased. Unless market conditions were deemed unusually risky, the increased amount and period would not be expected to exceed 30% and six months respectively.

Sub-delegation means that the Manager will appoint one or more specialist sub-delegates to manage the portfolio to achieve the objective and policy. The Manager will monitor and review the performance of the sub-delegates and change the management and allocation when it is felt to be in investors' interests, without prior notice.

Management Style

The Sub-fund is actively managed, meaning that the manager selects investments, rather than tracking a stock exchange or index.

Derivative Use

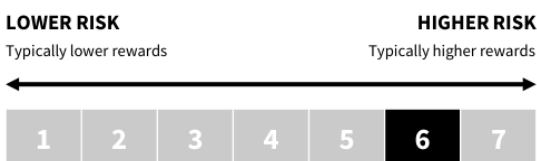
The use of derivatives and/or hedging transactions are permitted in connection with investment purposes and efficient portfolio management (EPM - managing the Sub-fund in a way that is designed to reduce risk or cost and/or generate extra income or growth or both).

General

Shares in the Sub-fund can be bought and sold daily (every Business Day of the Sub-fund). If you invest in income shares, income from investments in the Sub-fund will be paid out to you. If you invest in accumulation shares, income will be retained in the value of your shares.

Recommendation: this Sub-fund may not be appropriate for investors who plan to withdraw their money within 7 years.

Risk and Reward Profile



The risk and reward score is not guaranteed and may change over time. The lowest category does not mean risk free.

The Sub-fund is in this category due to the nature of its investments and previous levels of volatility (how much the value of the Sub-fund rises and falls). The risk and reward score is based on past performance and calculated in accordance with European legislation. It may not be a reliable indication of the future risk profile.

The following risk factors are relevant to the overall risk profile of the Sub-fund. A full description of risk warnings is provided in the prospectus, which is available on our website, or by requesting a copy.

Exposure to currencies other than the base currency is subject to currency fluctuations which could add to the rise and fall in value of investments.

Share prices fluctuate in value due to factors including political, economic, company earnings and corporate events.

The objective, policy and strategy set out above should align with the objectives of the investors and their minimum timeframe for investment.

Charges

The charges you pay are used to pay the costs of running the Sub-fund, including the costs of marketing and distribution. These charges reduce the potential growth of your investment.

One-off charges taken before or after you invest	
Entry Charge	0.00%
Exit Charge	0.00%

The entry and exit charges shown are the maximum figures. In some cases you might pay less – you can find this out from your financial adviser.

Charges taken from the Sub-fund over a year	
Ongoing Charges	0.97%
Performance Fee	0.00%

The ongoing charges figure is based on the last year's expenses (or reasonable estimate where Sub-fund has not been operating for a full calendar year), for the year to 29 Feb 2024 and this figure may vary, year to year. It excludes portfolio transaction costs.

For further details on the calculation of the charges please refer to the Sub-fund's prospectus.

Past Performance

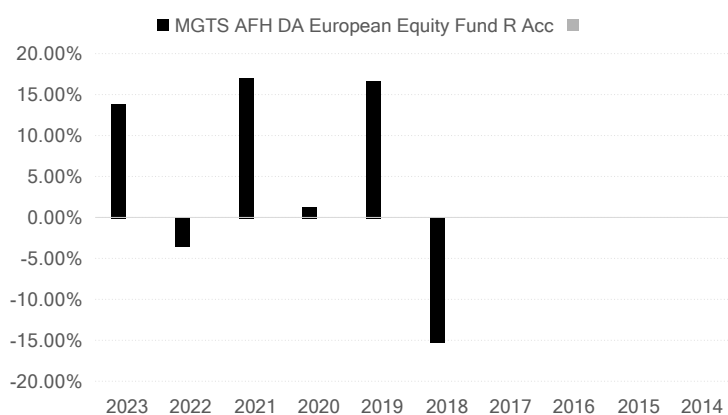
Past performance is not a reliable guide to future performance.

The past performance shown here takes account of all charges and costs except entry and exit charges and it is inclusive of net reinvested income.

The Sub-fund was launched on 02 Oct 2017.

The share class was launched on 02 Oct 2017.

The performance is calculated in pounds sterling.



Practical Information

The Depositary is The Bank of New York Mellon (International) Limited.

The Prospectus and latest annual and semi-annual reports, in English, along with the most recent prices, literature and further Sub-fund information is available on-line at www.mgtsfunds.com.

This is a Sub-fund of the MGTS AFH DA Fund. The Sub-funds are segregated by law and investors should view each Sub-fund as a separate investment entity meaning the liabilities of one Sub-fund do not count as liabilities of another Sub-fund.

The Sub-funds including this one are: MGTS AFH DA European Equity Fund, MGTS AFH DA Asia ex Japan Equity Fund, MGTS AFH DA Global Emerging Markets Equity Fund, MGTS AFH DA North American Equity Fund, MGTS AFH DA UK Alpha Fund, MGTS AFH DA UK Equity Fund, MGTS AFH DA UK Multi-Cap Growth Fund, MGTS AFH DA UK Smaller Companies Fund. It is possible to switch between Sub-funds on the same terms as an initial investment. Further information about dealing and switching to other share classes of this Sub-fund or other Sub-funds in this OEIC may be obtained by visiting www.mgtsfunds.com or found in the Company's prospectus.

The share classes available including this Sub-fund are: R Acc, I Acc, I Inc.

The Sub-fund is subject to tax laws and regulations in the UK. This may have an impact on your personal tax position. For further details please speak to your tax adviser.

Margetts Fund Management Ltd may be held liable solely on the basis of any statement contained in this document that is misleading, inaccurate or inconsistent with the relevant parts of the prospectus for the UK UCITS.

The Remuneration Policy and, where required by the Financial Conduct Authority, how benefits are calculated and details of the Remuneration Committee can be found on our website: www.margetts.com. A paper copy of this is available free of charge upon request.

The Sub-fund does not engage in securities financing transactions or loan securities or commodities to third parties.

This Sub-fund is authorised in the United Kingdom and regulated by the Financial Conduct Authority. Margetts Fund Management Ltd is authorised in the UK and regulated by the Financial Conduct Authority.

This key investor information is accurate as at 17 Jun 2024.