

Strategy

The fund is managed to track the performance of the MSCI Emerging Markets index. 'Index tracking' is also known as passive investment management. While the fund is designed to replicate the characteristics of the index, it may not necessarily hold all the company shares that make up the index, or hold shares in exactly the same weightings as the index. The costs that the fund incurs mean that its returns may not match the combined performance of the shares included in the index. The fund is managed by Geode Capital Management LLC, which is based in Boston and is a leading specialist in the management of index-based strategies. They have managed equity index strategies with a team-based approach since 2002.

Objectives & Investment Policy

Objective: The fund aims to track the performance (before fees and expenses are applied) of the MSCI Emerging Markets (Net Total Return) Index, thereby seeking to increase the value of your investment over 5 years or more.

Investment Policy: The fund uses an index tracking (passive) investment approach whereby it aims to replicate the composition of the index. However, for practical reasons and/or to reduce the dealing costs of the fund, it may not invest in every company share in the index or at its weighting within the index.

Investment Process: As well as investing directly in company shares, the fund will achieve exposure indirectly using derivatives, such as exchange traded index futures, for example at the time of cash inflows to remain fully invested or to reduce transaction costs. To manage the cash position, the fund may invest in other investment types such as liquidity funds (including those managed by Fidelity).

Derivatives and Techniques: Derivatives are investments whose value is linked to another investment, or to the performance of a stock exchange or to some other variable factor, such as interest rates and used to reduce risk or transaction costs and/or to generate extra income or further increase the value of your investment.

Additional information: Income earned by the fund is paid into the fund and reflected by an increase in the value of each share. Shares can usually be bought and sold each business day of the fund. The fund's performance can be compared to the MSCI Emerging Markets (Net total return) Index.

Fund Facts

Launch date: 06.03.14
Fund size: £ 1,187m
Number of positions in fund: 1288
Fund reference currency: UK Sterling (GBP)
Fund domicile: United Kingdom
Fund legal structure: OEIC
Management company: FIL Investment Services (UK) Limited
Capital guarantee: No

Share Class Facts

Other share classes may be available. Please refer to the prospectus for more details.

Launch date: 06.03.14
NAV price in share class currency: 1.8176
ISIN: GB00BHZK8D21
SEDOL: BHZK8D2
Bloomberg: FIEMKPA LN
Distribution type: Accumulating
Historic yield: 2.27%
Charges made to income or capital: Income
Ongoing Charges Figure (OCF) per year: 0.20% (29.02.24)
OCF takes into account annual management charge per year: 0.2%

Share Class Risk and Reward Profile



This risk indicator is taken from the key information document at the relevant month-end. Because it may be updated during a month, please refer to the key information document for the most up-to-date information.

- Historical data may not be a reliable indication for the future.
- The risk category shown is not guaranteed and may change over time.
- The lowest category does not mean a "risk free" investment.
- The risk and reward profile is classified by the level of historical fluctuation of the Net Asset Values of the share class, and within this classification, categories 1-2 indicate a low level of historical fluctuations, 3-5 a medium level and 6-7 a high level.
- The value of your investment may fall as well as rise and you may get back less than you originally invested.
- The fund may invest in instruments denominated in currencies other than the fund base currency. Changes in currency exchange rates can therefore affect the value of your investment.

Important Information

The value of your investment may fall as well as rise and you may get back less than you originally invested. This fund invests in emerging markets which can be more volatile than other more developed markets. This fund uses financial derivative instruments for investment purposes, which may expose the fund to a higher degree of risk and can cause investments to experience larger than average price fluctuations.

Performance calculation: fund official prices

The fund performance below is based on the official published share price at noon each day, UK time. No index performance data is available as there is no comparable noon price for the index. Index data is shown on page 3 alongside hypothetical fund performance based on market-closing prices.

Past performance does not predict future returns. The fund's returns may increase or decrease as a result of currency fluctuations. The investment which is promoted concerns the acquisition of units or shares in a fund, and not in a given underlying asset owned by the fund.

Performance Comparator(s)

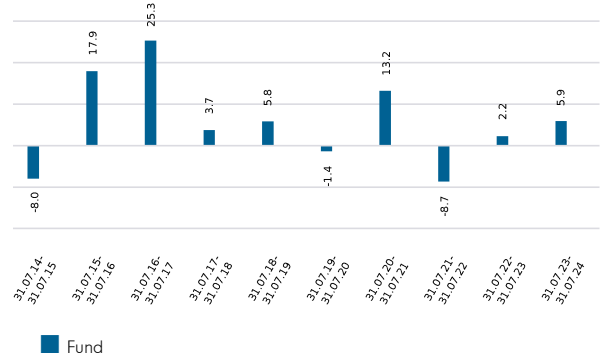
Peer Group Universe Morningstar IA Global Emerg Markets

Cumulative performance in GBP (rebased to 100)

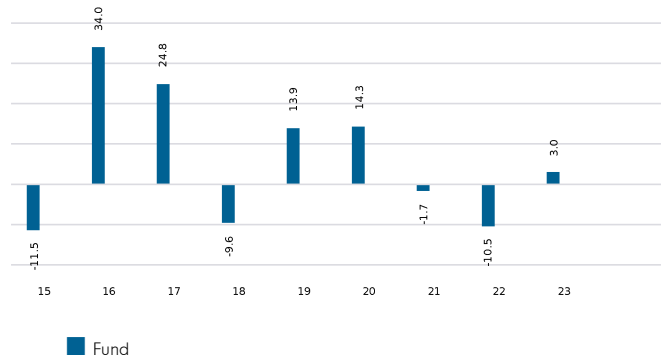


Performance is shown for the last five years (or since launch for funds launched within that period).

Performance for 12 month periods in GBP (%)



Performance for calendar years in GBP (%)



Volatility & Risk (3 years)

Annualised Volatility: fund (%) 12.99
Sharpe Ratio: fund -0.04

Calculated using month-end data points. Definitions of these terms can be found in the Glossary section of this factsheet.

Performance to 31.07.24 in GBP (%)

	1m	3m	YTD	1yr	3yr	5yr	Since 06.03.14*
Fund cumulative growth	-1.4	1.7	6.7	5.9	-1.3	10.2	81.8
Fund annualised growth	-	-	-	5.9	-0.4	2.0	5.9
Ranking within Peer Group Universe							
P Accumulation Shares	33	36	51	48	39	55	
Total number of funds	134	133	133	133	125	110	
Quartile ranking**	1	2	2	2	2	2	

Source of fund performance and volatility and risk measures is Fidelity. Performance is excluding initial charge.

Basis: bid-bid with income reinvested, in GBP, net of fees.

Peer Group data is sourced from Morningstar.

*Performance commencement date.

**Quartile rank is for the fund's primary share class as identified by Morningstar, which may be different than the share class detailed in this factsheet and refers to performance over time rated on a scale of 1-4. A ranking of 1 indicates that the item being ranked is in the top 25% of the sample and so on. Rankings are based on a performance record that is included in the Peer Group Universe. In line with Investment Association methodology, this record may include a track record extension from a legacy share class and the record may not be the same class of this factsheet. Quartile ranking is an internal Fidelity International calculation. Ranking may vary by share class.

Performance calculation: fund and index comparison

The fund performance below allows a meaningful comparison as to how well the fund is tracking the index as the fund has been hypothetically re-priced using company share prices that make up the index at market close. This is for illustrative purposes only and no client dealing takes place using the Performance Net Asset Value (PNAV). Any difference in the performance of the PNAV and market index takes into account factors such as ongoing charges, transaction costs and taxation.

Past performance does not predict future returns. The fund's returns may increase or decrease as a result of currency fluctuations. The investment which is promoted concerns the acquisition of units or shares in a fund, and not in a given underlying asset owned by the fund.

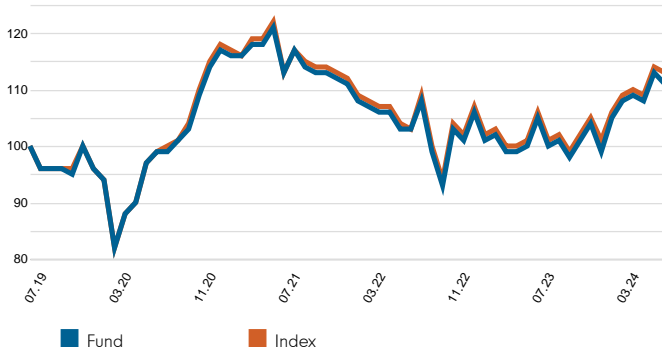
Performance Comparator(s)

Market index from 06.03.14 MSCI Emerging Markets Index (Net)

Market index is for comparative purposes only unless specifically referenced in the Objectives & Investment Policy on page 1. The same index is used in the positioning tables on this factsheet.

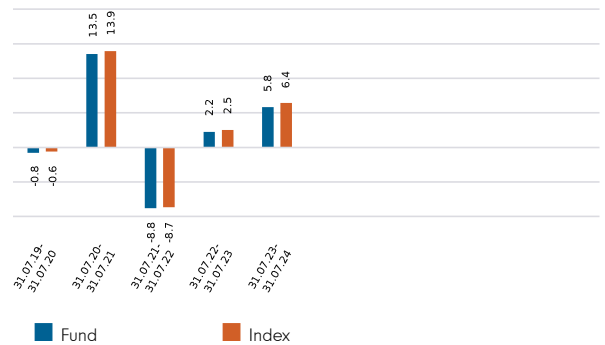
Where the effective date for the current market index is after the share class launch date, full history is available from Fidelity.

Cumulative performance in GBP (rebased to 100)

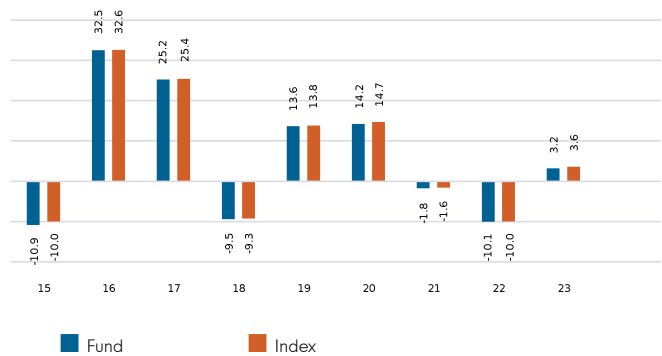


Performance is shown for the last five years (or since launch for funds launched within that period).

Performance for 12 month periods in GBP (%)



Performance for calendar years in GBP (%)



Volatility & Risk (3 years)

Annualised Volatility: fund (%)	13.31	Annualised Alpha	-0.33
		Beta	1.00
Relative Volatility	1.00	Annualised Tracking Error (%)	0.24
Sharpe Ratio: fund	-0.04	Information Ratio	-1.35
		R²	1.00

Calculated using month-end data points. Definitions of these terms can be found in the Glossary section of this factsheet.

Performance to 31.07.24 in GBP (%)

	1m	3m	YTD	1yr	3yr	5yr	Since 06.03.14*
Fund cumulative growth	-1.4	2.0	6.7	5.8	-1.4	11.0	81.8
Index cumulative growth	-1.3	2.2	7.0	6.4	-0.4	12.7	88.1
Fund annualised growth	-	-	-	5.8	-0.5	2.1	5.9
Index annualised growth	-	-	-	6.4	-0.1	2.4	6.3

Source of fund performance and volatility and risk measures is Fidelity. Performance is excluding initial charge. Basis: bid-bid with income reinvested, in GBP, net of fees. Market indices are sourced from RIMES and other data is sourced from third-party providers such as Morningstar.

*Performance commencement date.

**Quartile rank is for the fund's primary share class as identified by Morningstar, which may be different than the share class detailed in this factsheet and refers to performance over time rated on a scale of 1-4. A ranking of 1 indicates that the item being ranked is in the top 25% of the sample and so on. Rankings are based on a performance record that is included in the Peer Group Universe. In line with Investment Association methodology, this record may include a track record extension from a legacy share class and the record may not be the same class of this factsheet. Quartile ranking is an internal Fidelity International calculation. Ranking may vary by share class.

Sector/Industry Breakdown (%)

GICS Sector	Index
Information Technology	24.3
Financials	22.3
Consumer Discretionary	12.3
Communication Services	8.8
Materials	7.0
Industrials	6.9
Consumer Staples	5.3
Energy	5.1
Health Care	3.5
Utilities	3.1
Real Estate	1.5
Total Sector Exposure	100.0
Unclassified	0.0
Total Equity Exposure	100.0

Market Cap Breakdown (%)

GBP	Index
>10bn	68.1
5-10bn	18.9
1-5bn	10.8
0-1bn	0.3
Total Market Cap Exposure	98.0
Unclassified	2.0
Total Equity Exposure	100.0

Geographic Breakdown (%)

	Index
China	24.5
India	20.0
Taiwan	18.4
Korea (South)	12.1
Brazil	4.3
Saudi Arabia	4.0
South Africa	3.1
Mexico	2.1
Indonesia	1.6
Malaysia	1.4
Others	8.3
Total Geographic Exposure	100.0
Other Index / Unclassified	0.0
Total Equity Exposure	100.0

Top Stocks (%)

	GICS Sector	Geographic Location	Index
TAIWAN SEMICONDUCTOR MFG CO LTD	Information Technology	Taiwan	9.3
SAMSUNG ELECTRONICS CO LTD	Information Technology	Korea (South)	4.4
TENCENT HLDGS LTD	Communication Services	China	4.1
ALIBABA GROUP HOLDING LTD	Consumer Discretionary	China	2.0
RELIANCE INDUSTRIES LTD	Energy	India	1.5
SK HYNIX INC	Information Technology	Korea (South)	1.0
PDD HOLDINGS INC	Consumer Discretionary	China	1.0
ICICI BANK LTD	Financials	India	1.0
HON HAI PRECISION INDUSTRY CO LTD	Information Technology	Taiwan	1.0
INFOSYS LTD	Information Technology	India	1.0

Stocks Concentration (%)

	Index
Top 10	26.2
Top 20	33.1
Top 50	44.3

Figures may not always sum to totals due to rounding.

ESG Metrics

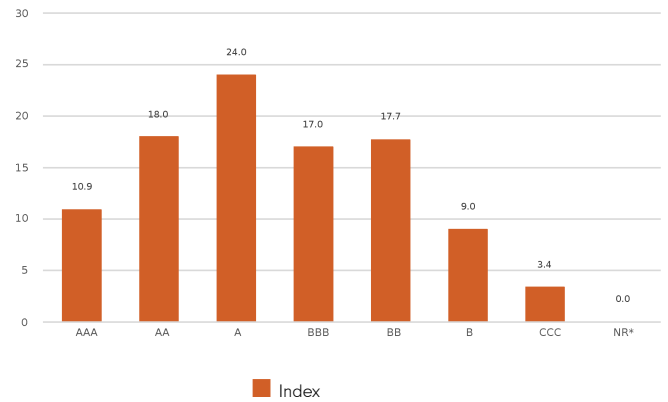
The factsheet is a snapshot of the portfolio at the date indicated above. ESG ratings distribution may vary over time. Representation of this data is for informational purposes only. Product-specific information can be found on our website at www.fidelityinternational.com. The portfolio manager may use MSCI ESG ratings or Fidelity ESG ratings as part of investment decisions. The MSCI ESG Ratings Distribution is shown for informational purposes only.

Sustainability Characteristics (31.07.2024)

MSCI ESG Fund Rating (AAA-CCC)	A
Index Weighted Average Carbon Intensity (tCo2e/\$M Revenue)	353.8

N/A - Not Applicable
 N/R - Not Rated

MSCI ESG Ratings Distribution % (31.07.2024)



Glossary

MSCI ESG Fund Rating: This shows the fund's ESG rating based on the Quality Scores given to the fund by MSCI. This ranges from AAA, AA (Leader), A, BBB, BB (Average) to B, CCC (Laggard). To be included in MSCI ESG Fund Ratings, 65% of the fund's gross weight must come from covered securities (and excluding cash), the fund's holdings date must be less than one year old and the fund must have at least ten securities.

Weighted Average Carbon Intensity: Is calculated as the sum of each security's weight in the index multiplied by its Co2e per \$M of Revenue. This metric provides a snapshot of the Index's exposure to carbon-intensive companies and includes scope 1 and scope 2 carbon emissions. For carbon data, the coverage of underlying securities must be over 50% for data to be shown.

MSCI ESG Ratings Distribution: This shows the percentage of ESG ratings.

Disclaimer

ESG Rating Source: ©2024 MSCI ESG Research LLC. Reproduced by permission, no further distribution. Although Fidelity International's information providers, including without limitation, MSCI ESG Research LLC and its affiliates (the "ESG Parties"), obtain information from sources they consider reliable, none of the ESG Parties warrants or guarantees the originality, accuracy and/or completeness of any data herein. None of the ESG Parties makes any express or implied warranties of any kind, and the ESG Parties hereby expressly disclaim all warranties of merchantability and fitness for a particular purpose, with respect to any data herein. None of the ESG Parties shall have any liability for any errors or omissions in connection with any data herein. Further, without limiting any of the foregoing, in no event shall any of the ESG Parties have any liability for any direct, indirect, special, punitive, consequential or any other damages (including lost profits) even if notified of the possibility of such damages. The information is as at the date of production based on data provided by MSCI. There may be timing differences between the date at which data is captured and reported. For more up to date information, you can visit <https://www.msci.com/esg-fund-ratings>

Carbon Data Source: Data provided by ISS ESG. All rights in the information provided by Institutional Shareholder Services Inc. and its affiliates (ISS) reside with ISS and/or its licensors. ISS makes no express or implied warranties of any kind and shall have no liability for any errors, omissions or interruptions in or in connection with any data provided by ISS. The information is as at the date of production based on carbon data provided by ISS. There may be timing differences between the date at which data is captured and reported.

Glossary / additional notes

Volatility & Risk

Annualised volatility: a measure of how variable returns for a fund or comparative market index have been around their historical average (also known as “standard deviation”). Two funds may produce the same return over a period. The fund whose monthly returns have varied less will have a lower annualised volatility and will be considered to have achieved its returns with less risk. The calculation is the standard deviation of 36 monthly returns presented as an annualised number. Volatility for funds and indices are calculated independently of each other.

Relative volatility: a ratio calculated by comparing the annualised volatility of a fund to the annualised volatility of a comparative market index. A value greater than 1 indicates the fund has been more volatile than the index. A value less than 1 shows the fund has been less volatile than the index. A relative volatility of 1.2 means the fund has been 20% more volatile than the index, while a measure of 0.8 would mean the fund has been 20% less volatile than the index.

Sharpe ratio: a measure of a fund’s risk-adjusted performance, taking into account the return on a risk-free investment. The ratio allows an investor to assess whether the fund is generating adequate returns for the level of risk it is taking. The higher the ratio, the better the risk-adjusted performance has been. If the ratio is negative, the fund has returned less than the risk-free rate. The ratio is calculated by subtracting the risk-free return (such as cash) in the relevant currency from the fund’s return, then dividing the result by the fund’s volatility. It is calculated using annualised numbers.

Annualised alpha: the difference between a fund’s expected return (based on its beta) and the fund’s actual return. A fund with a positive alpha has delivered more return than would be expected given its beta.

Beta: a measure of a fund’s sensitivity to market movements (as represented by a market index). The beta of the market is 1.00 by definition. A beta of 1.10 shows that the fund could be expected to perform 10% better than the index in up markets and 10% worse in down markets, assuming all other factors remain constant. Conversely, a beta of 0.85 indicates that the fund could be expected to perform 15% worse than the market return during up markets and 15% better during down markets.

Annualised tracking error: a measure showing how closely a fund follows the index to which it is being compared. It is the standard deviation of the fund’s excess returns. The higher the fund’s tracking error, the higher the variability of fund returns around the market index.

Information ratio: a measure of a fund’s effectiveness in generating excess return for the level of risk taken. An information ratio of 0.5 shows the fund has delivered an annualised excess return equivalent to half the value of the tracking error. The ratio is calculated by taking the fund’s annualised excess return and dividing it by the fund’s tracking error.

R²: a measure representing the degree to which a fund’s return can be explained by the returns of a comparative market index. A value of 1 signifies the fund and index are perfectly correlated. A measure of 0.5 means only 50% of the fund’s performance can be explained by the index. If the R² is 0.5 or lower, the fund’s beta (and therefore its alpha too) is not a reliable measure (due to a low correlation between fund and index).

Ongoing charges

The ongoing charges figure represents the charges taken from the fund over a year. It is calculated at the fund's financial year end and may vary from year to year. For classes of funds with fixed ongoing charges, this may not vary from year to year. For new classes of funds or classes undergoing corporate actions (eg amendment to annual management charge), the ongoing charges figure is estimated until the criteria are met for an actual ongoing charges figure to be published.

The types of charges included in the ongoing charges figure are management fees, administration fees, custodian and depositary fees and transaction charges, shareholder reporting costs, regulatory registration fees, Directors fees (where applicable) and bank charges. It excludes: performance fees (where applicable); portfolio transaction costs, except in the case of an entry/exit charge paid by the fund when buying or selling units in another collective investment undertaking.

For more information about charges (including details of the fund's financial year end), please consult the charges section in the most recent Prospectus.

Historic yield

The historic yield for a fund is based on its dividends declared over the preceding 12 months. It is calculated by summing the dividend rates declared in that period, divided by the price as at the date of publication. Declared dividends may not be confirmed and may be subject to change. Where 12 months of declared dividend data does not exist a historic yield will not be published.

Sector/industry classification

GICS: The Global Industry Classification Standard is a taxonomy mainly used across MSCI and S&P indices in which each company is assigned by its principal business activity to one of 11 sectors, 24 industry groups, 69 industries and 158 sub-industries. More information is available at <http://www.msci.com/gics>

ICB: The Industry Classification Benchmark is a taxonomy mainly used across FTSE Russell indices in which each company is assigned by its principal business activity to one of 11 industries, 20 supersectors, 45 sectors and 173 subsectors. More information is available at <https://www.ftserussell.com/data/industry-classification-benchmark-icb>

TOPIX: Tokyo stock Price Index, commonly known as TOPIX, is a stock market index for the Tokyo Stock Exchange (TSE) in Japan, tracking all domestic companies of the exchange’s First Section. It is calculated and published by the TSE.

IPD means the Investment Property Databank who are a provider of performance analysis and benchmarking services for investors in real estate. IPD UK Pooled Property Funds Index - All Balanced Funds is a component of the IPD Pooled Funds Indices which is published quarterly by IPD.

Performance

PNAV: Performance Net Asset Value enables calculation of how a fund would have hypothetically performed if its valuation point had been aligned with the index. It is calculated at the month end by revaluing fund assets using market-closing prices to align with the index, standard WM/Reuters closing FX rates (fixed at 16.00 UK time) to align with the index, and stripping out any adjustments resulting from Fidelity International’s fair value or swing pricing policies. This simulated performance is for illustrative purposes only. No client dealing takes place using PNAV.

Primary share class: is identified by Morningstar when the analysis calls for only one share class per fund to be in the peer group. It is the share class Morningstar recommends as the best proxy for the portfolio for the relevant market and category/GIF combination. In most cases the share class chosen will be the most retail version (based upon actual management charge, inception date, distribution status, currency and other factors) unless a share class that is less retailed focused has a much longer track record. It is different to the oldest share class data point in that it is on an available for sale level and not all markets will have the oldest share class for sale in that region. The Primary share class is also based on category so each available for sale/category combination for the fund will have its own primary share class.

Important Information

This is a marketing communication. This information must not be reproduced or circulated without prior permission.

Fidelity only offers information on products and services and does not provide investment advice based on individual circumstances, other than when specifically stipulated by an appropriately authorised firm, in a formal communication with the client.

Fidelity International refers to the group of companies which form the global investment management organisation that provides information on products and services in designated jurisdictions outside of North America. This communication is not directed at, and must not be acted upon by persons inside the United States and is otherwise only directed at persons residing in jurisdictions where the relevant funds are authorised for distribution or where no such authorisation is required.

Unless otherwise stated all products and services are provided by Fidelity International, and all views expressed are those of Fidelity International. Fidelity, Fidelity International, the Fidelity International logo and F symbol are registered trademarks of FIL Limited.

FIL Limited assets and resources as at 28/02/2023 - data is unaudited. Research professionals include both analysts and associates. Fidelity Investment Funds, Fidelity Investment Funds 2, Fidelity Investment Funds III, Fidelity Investment Funds IV, Fidelity Investment Funds VIII and Fidelity Investment Funds IX are open-ended investment companies (OEICs) with variable capital, incorporated in England and Wales, being authorised and regulated by the Financial Conduct Authority. The Authorised Corporate Director of these OEICs is FIL Investment Services (UK) Limited.

Data Source - © 2024 Morningstar, Inc. All Rights Reserved. The information contained herein:

(1) is proprietary to Morningstar and/or its content providers;

(2) may not be copied or distributed; and

(3) is not warranted to be accurate, complete or timely. Neither Morningstar nor its content providers are responsible for any damages or losses arising from any use of this information.

This share class is registered and distributed in the following locations: United Kingdom.

United Kingdom : Investments should be made on the basis of the KIID (key investor information document) which is available at www.fidelity.co.uk The full prospectus may also be obtained from Fidelity. Issued by FIL Investment Services (UK) Limited, a firm authorised and regulated in the UK by the Financial Conduct Authority. This document may be provided to you by a distributor, including a Fidelity International distributor such as FIL Pensions Management or Financial Administration Services Limited, both of which are authorised and regulated by the Financial Conduct Authority.

CSO4925 CL1305901/NA GB_English 28493 T55b